



UNDERCOUNTER TYPE DISHWASHER

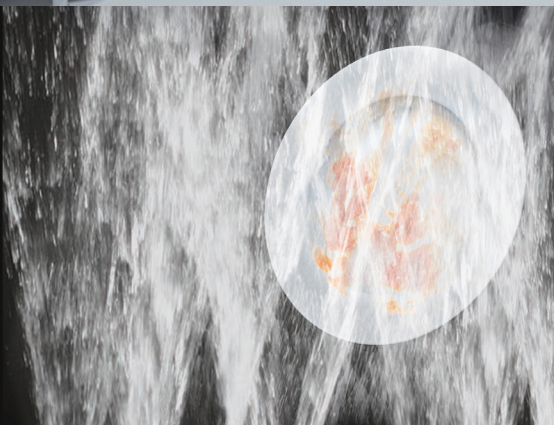
HW-320B-S



WASHING

POWERFUL WASHING

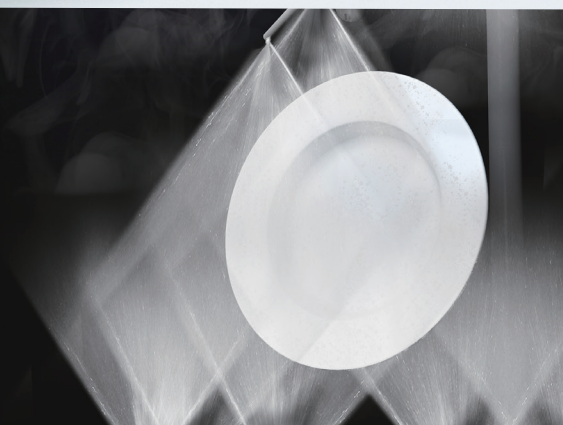
Japan designed original washing nozzles clean up every corner powerfully and perfectly.



RINSING

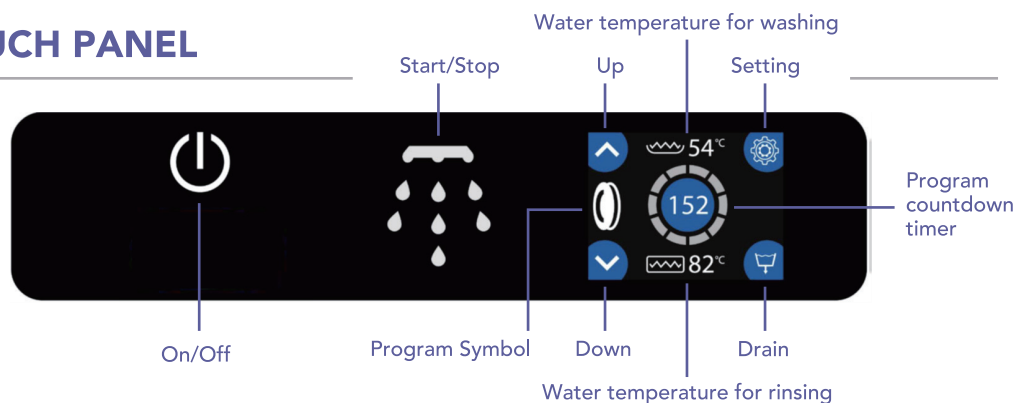
ENVIRONMENTALLY FRIENDLY

Japan designed original rinsing nozzles that can spray to wide angle by small amount of water enable wash away detergent thoroughly with less water consumption.

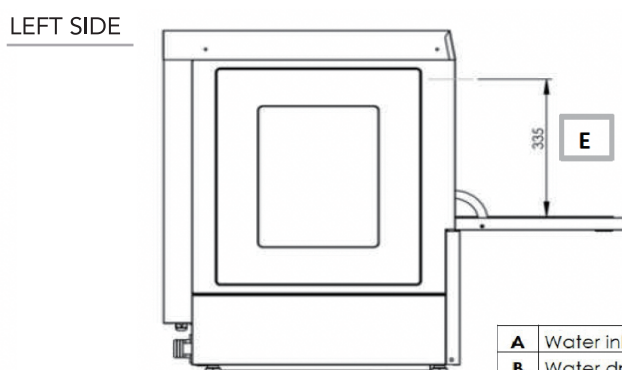
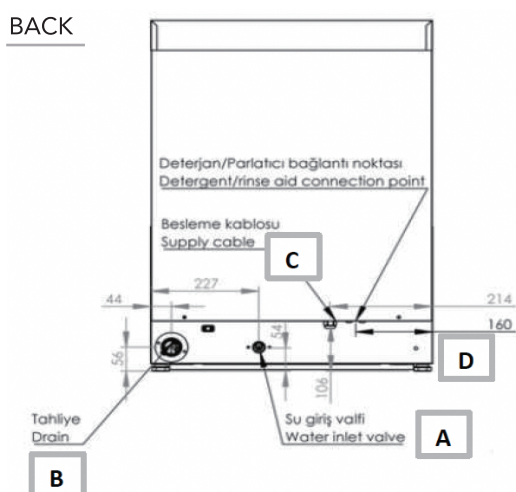
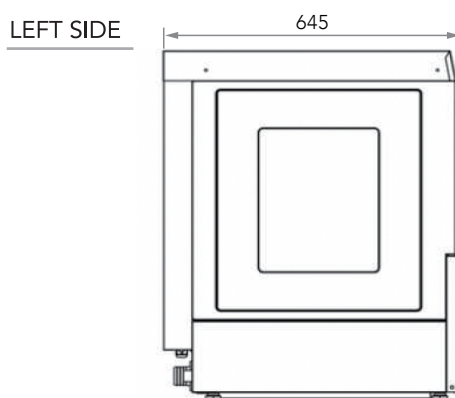
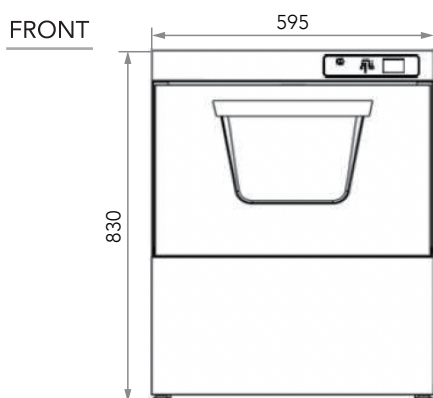


EASY TO USE TOUCH PANEL

User friendly touch control panel follows washing steps easily with colored and dynamic graphics. Detergent / Rinse aid time is adjustable from touch control panel.



UNDERCOUNTER TYPE DISHWASHER HW-320B-S



A	Water inlet
B	Water drain
C	Power supply
D	Earthing
E	Loading height

Code Model Name	075T.11110H.AD HW-320B-S PDRT
Power Supply	1 ph / 220 - 240 V / 50 Hz
Electric Consumption	5.2 - 6.1 kW
Washing Heat Power	1.8 - 2.2 kW
Rinsing Heat Power	4.6 - 5.4 kW
Rack Dimensions	500 x 500 mm
Number of Programmes	5
Washing Capacity (Rack / Hour)	35 / 27 / 23 / 20 / 18
Washing Water Temp.	55 - 60 °C
Rinsing Water Temp.	80 - 85 °C
Water Consumption	2.3 L

Washing / Boiler Tank Capacity	28 L / 6 L
Max. Noise	65 dBA
Loading Height	335 mm
Outside Dimensions / Weight	595 (W) x 645 (D) x 830 (H) mm / 53 kg
Package / Weight	700 (W) x 750 (D) x 1000 (H) mm / 62 kg
Water Inlet Connection	3 / 4 inch
Water Inlet Pressure / Temp.	2 - 4 Bar / max 50 °C
Drain Water Discharge Connection	3 / 4 inch (Ø28 mm)
Accessories	<ul style="list-style-type: none"> - Electrical Connection Cable - Flexible Water Supply and Drain Hose - 2 Racks (Plate and Glass) - 1 Small Cutlery Basket - Detergent & Rinse Aid Dispenser - Drain Pump